

Photometric Report

ERA 800 – Wide

MARTIN PROFESSIONAL R&D OPTICAL LABORATORY

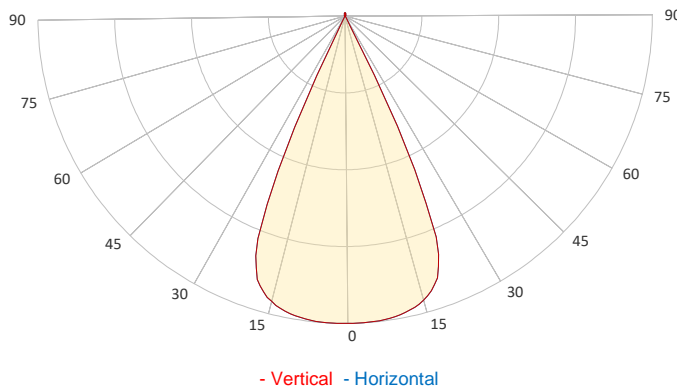
GENERAL SPECIFICATIONS

Total Fixture Output:	35000 lm
Light Engine Output:	70 klm
Efficacy:	30 lm/W
Lens Option:	N/A
Beam Angle (50%):	6-49°
Field Angle (10%):	°
Cut-off Angle (3%):	°
CRI:	70
CQS:	67
TM-30 Rf:	65
TM-30 Rg:	93
TLCI:	44
Color Temperature:	6900 K



SAMPLE MEASUREMENT

POLAR PLOT

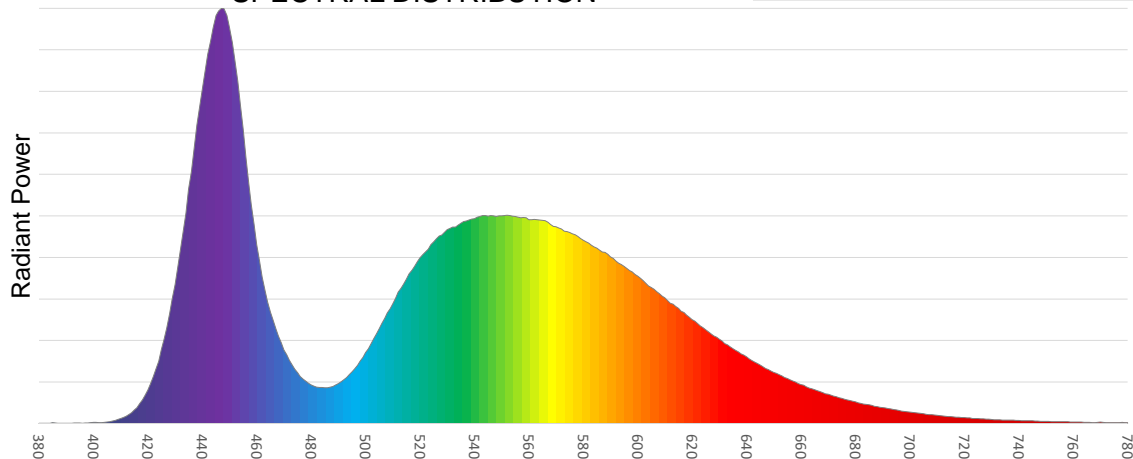


Catalog Number:	9025122052
Measured Output:	33740 lm
Measured Peak:	61109 cd
Consumed Power:	1161.5 W
Efficacy:	30.2 lm/W

Beam Angle (50%):	48.9°
Field Angle (10%):	53.3°
Cut-off Angle (3%):	54.1°

Measurement Condition:	
Ambient Temperature:	25° +/- 5° C
AC Supply:	230V/50Hz
Fan Mode:	
Fixture Warm-up Time:	60 minutes

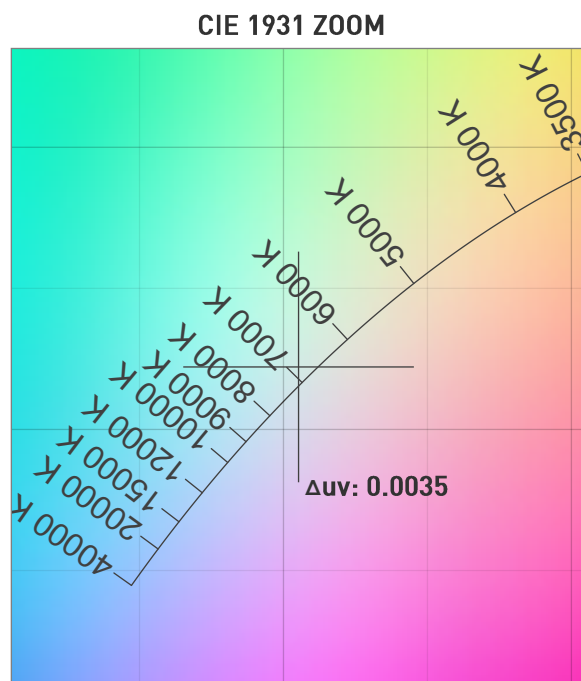
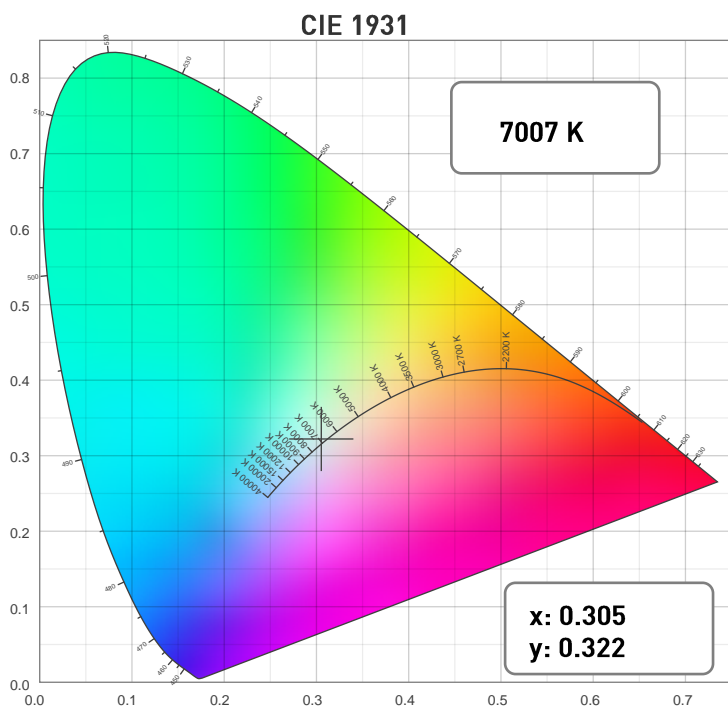
SPECTRAL DISTRIBUTION



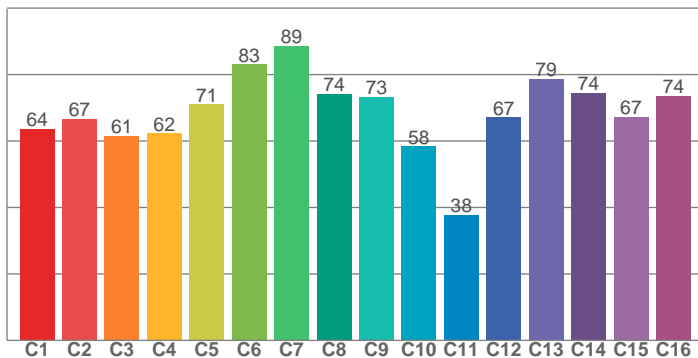
Photometric Report

ERA 800 – Wide

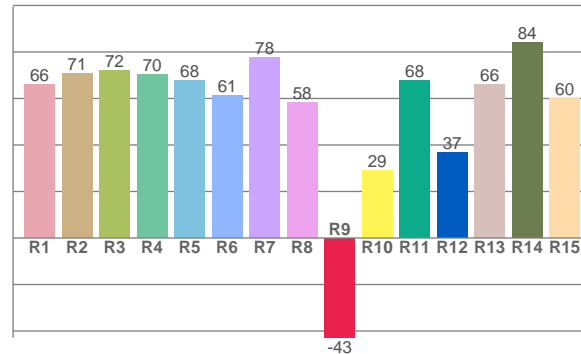
CHROMATICITY



TM30: 68.7



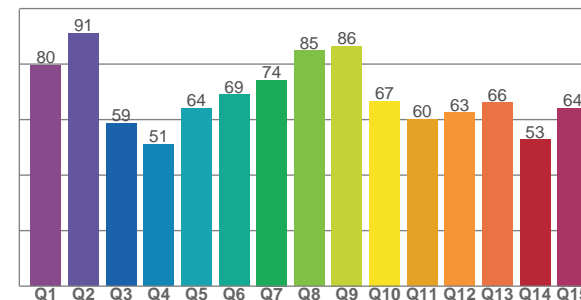
CRI: 68.0 (R1-R8)



COLOR PARAMETERS

Color Temperature	Color Rendering Index	Red Component	Color Fidelity	Color Gamut
CCT	CRI	CRI R9	TM30 Rf	TM30 Rg
7007 K	68.0	-42.9	68.7	92.6

CQS: 66.6



Television Lighting Consistency Index	Color Quality Scale	Color Coordinate CIE 1931	Color Coordinate CIE 1931	Color Coordinate CIE 1964	Color Coordinate CIE 1964	Color Deviation from Black Body
TLCI	CQS	x	y	u	v	Δuv
44	66.6	0.305	0.322	0.195	0.309	0.0035

Photometric Report

ERA 800 – Wide

TM30

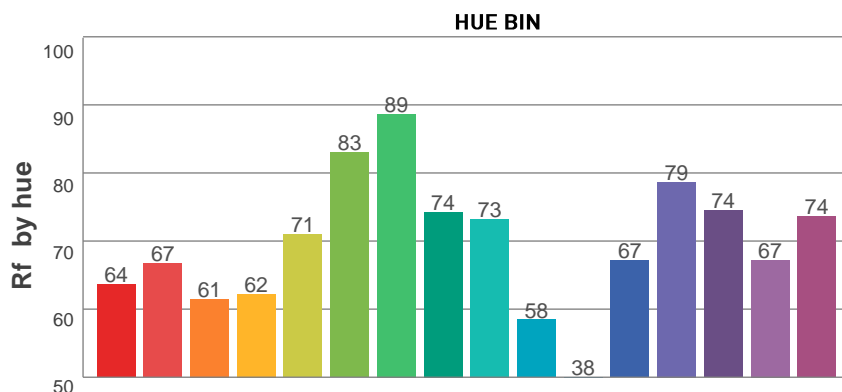
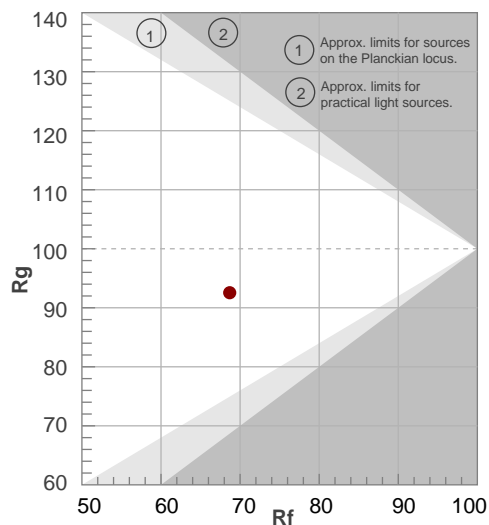
Rf 68.7

Fidelity index Rf

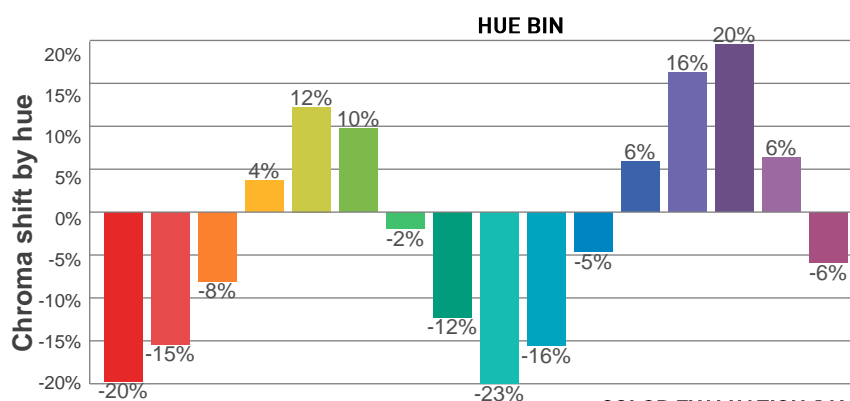
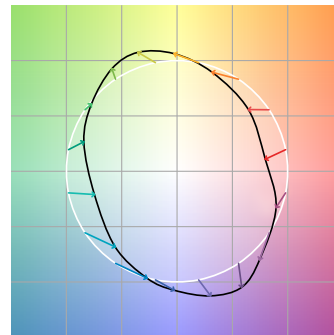
Rg 92.6

Gamut index Rg

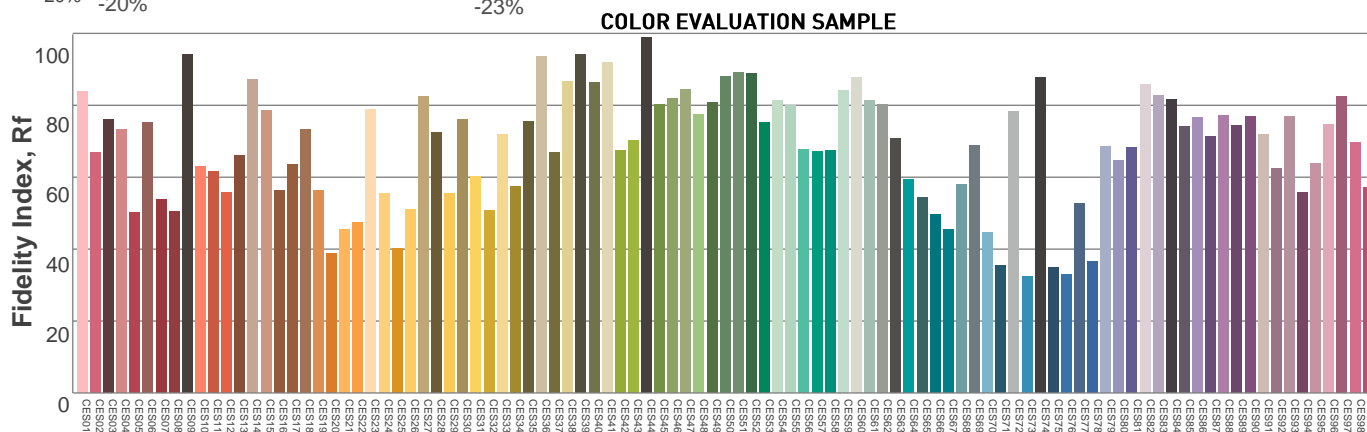
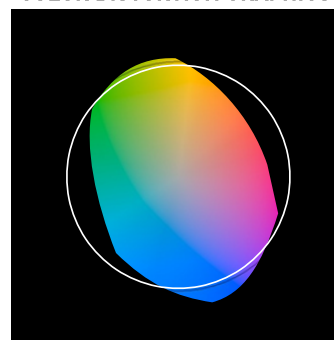
Hue Bin	R _f	Graphic shifts (%)	
		Chroma	Hue
1	64	-20%	-5%
2	67	-15%	11%
3	61	-8%	23%
4	62	4%	23%
5	71	12%	14%
6	83	10%	-3%
7	89	-2%	-8%
8	74	-12%	-10%
9	73	-23%	6%
10	58	-16%	26%
11	38	-5%	31%
12	67	6%	18%
13	79	16%	8%
14	74	20%	-10%
15	67	6%	-25%
16	74	-6%	-15%



COLOR VECTOR GRAPHICS



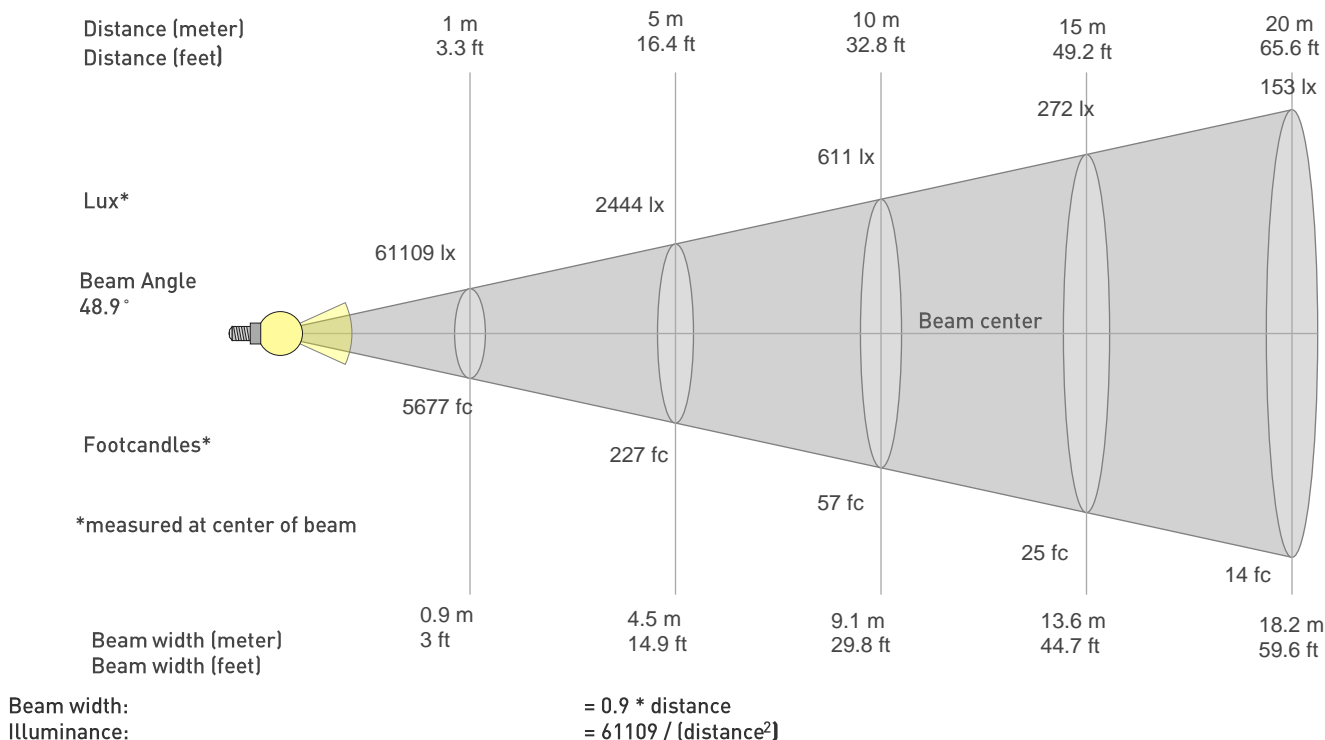
COLOR DISTORTION GRAPHICS



Photometric Report

ERA 800 – Wide

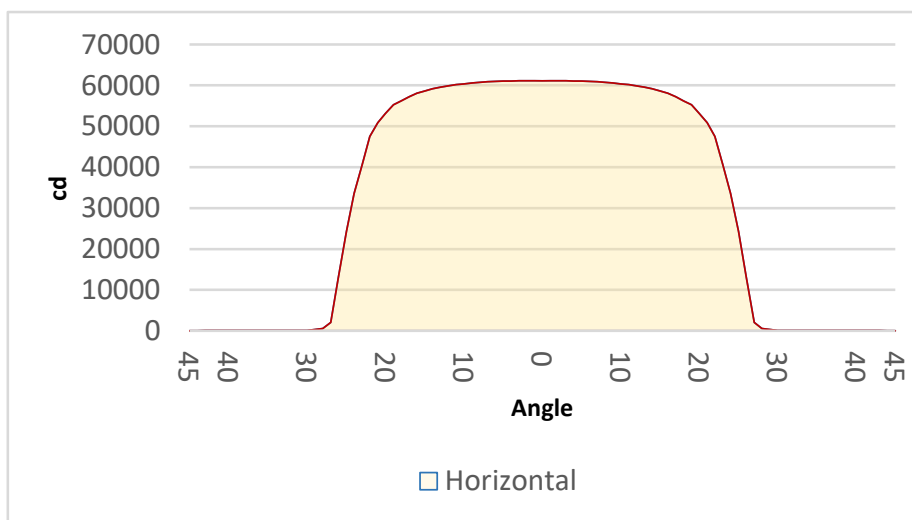
BEAM DETAILS



distance in [m] for illuminance in [lux] distance in [ft] for illuminance in [fc]

BEAM ILLUMINANCE FROM 1-20M

1m	2m	3m	4m	5m	6m	7m	8m	9m	10m	11m	12m	13m	14m	15m	16m	17m	18m	19m	20m
3.3ft	6.6ft	9.8ft	13.1ft	16.4ft	19.7ft	23ft	26.2ft	29.5ft	32.8ft	36.1ft	39.4ft	42.7ft	45.9ft	49.2ft	52.5ft	55.8ft	59.1ft	62.3ft	65.6ft
61109lx	15277lx	6790lx	3819lx	2444lx	1697lx	1247lx	955lx	754lx	611lx	505lx	424lx	362lx	312lx	272lx	239lx	211lx	189lx	169lx	153lx
5677.2fc	1419.3fc	630.8fc	354.8fc	227.1fc	157.7fc	115.9fc	88.7fc	70.1fc	56.8fc	46.9fc	39.4fc	33.6fc	29fc	25.2fc	22.2fc	19.6fc	17.5fc	15.7fc	14.2fc



BEAM ANGLE 50%	FIELD ANGLE 10%	CUTOFF ANGLE 3%
48.9°	53.3°	54.1°